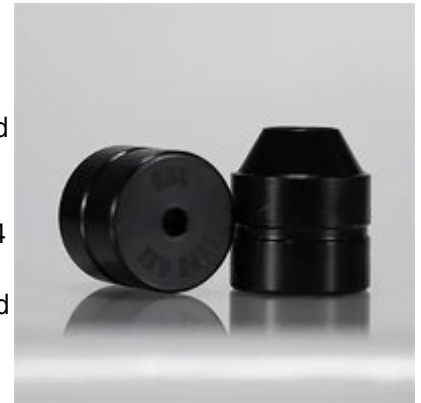


# INFINITY APS DIE INSERTS - SHORT ACTION CUSTOMS, LLC.

## INFINITY AAPS DIE INSERT TYPE 6XL

[Reloading](#) > [Reloading Dies](#) > [Rifle Dies](#)

The INFINITY APS Die (Arbor Press Series) is designed to be the ONLY bullet seating die you will ever need when reloading cartridges from 223 Remington to the 338 Lapua Magnum from an Arbor style press. The Infinity Bullet APS Seating Die comes complete with 6 different bullet seating stems and 2 cartridge centering sleeves to handle conventional and solid turned bullets from 20 to 338 caliber, simply select the appropriate Cartridge Base Insert and you're ready to create high quality ammunition. Base Inserts fit the following Cartridge Families: Type 1 - 223 Remington Based Cartridges Type 2 - Valkyrie Based Cartridges Type 3 - PPC, Grendel, SPC Based Cartridges Type 4 - Short Action 308 Winchester & Creedmoor Based Cartridges Type 4 XL - Long Action 308 Win & 30-06 Based Cartridges Type 5 - 284 Winchester Based Cartridges Type 6 - Short Action PRC Based Cartridges Type 6 XL - Long Action PRC, Belted & Weatherby Magnum Based Cartridges Type 7 - SAUM Based Cartridges Type 7 XL - Nosler and RUM Based Cartridges Type 8 - WSM Based Cartridges Type 9 - Lapua and Norma Magnum based Cartridges



### Attributes

- Name: [SHORT ACTION CUSTOMS, LLC. INFINITY AAPS DIE INSERT TYPE 6XL](#)
- Manufacturer: [SHORT ACTION CUSTOMS, LLC.](#)
- Product no.: 430109986
- Mfr. No.: SAC-IAPDCB6XL
- Cartridge: 7 mm LRM, 300 Winchester Magnum, 7 mm Remington Magnum, 300 PRC, 270 Weatherby Magnum, 264 Winchester Magnum, 7mm PRC, 300 Weatherby Magnum, 7 mm Weatherby Magnum
- Die Style: Seater Die
- Delivery weight: 0.181kg
- Shipping height: 51mm
- Shipping width: 102mm
- Shipping length: 102mm

### Item details

Made in USA

# Table of Contents

- [Startpage](#)
- [Safety Instruction Guide for INFINITY APS Die Inserts](#)
- [About Us](#)

# Safety Instruction Guide for INFINITY APS Die Inserts

## Introduction

Thank you for choosing the INFINITY APS Die Inserts, designed for use with Arbor style presses. This guide provides essential safety instructions to ensure the safe and effective use of your die inserts. Please read through this guide carefully before using the product.

## General Safety Guidelines

- Ensure that the product is used only for its intended purpose.
- Always follow the manufacturer's instructions for use and maintenance.
- Keep the product out of reach of children and vulnerable individuals.
- Inspect the product for damage before use. Do not use if damaged.
- Report any unsafe products or accidents to the appropriate authorities.
- Check for recall updates on the EU's Safety Gate platform.
- Ensure proper ventilation when using the product to avoid inhalation of dust or fumes.

## Specific Safety Precautions for Use

- Always wear appropriate personal protective equipment (PPE), including safety glasses and gloves, when handling the die inserts.
- Do not exceed the recommended load limits of the Arbor style press.
- Ensure that all components are securely fastened before use to prevent accidents.
- Use the correct Cartridge Base Insert for the specific cartridge family you are working with to avoid malfunctions.
- Avoid using the die inserts in wet or damp conditions to prevent electrical hazards.
- Do not modify the product in any way. Unauthorized modifications may result in unsafe conditions.
- Be aware of your surroundings and ensure that no one is in close proximity while operating the die inserts.

## Instructions for Installation and Usage

### 1. Preparation

- Gather all necessary components, including the INFINITY APS Die Inserts, Arbor press, and appropriate Cartridge Base Inserts.
- Ensure your workspace is clean and organized to prevent accidents.

### 2. Installation

- Select the appropriate Cartridge Base Insert based on the cartridge family you are using.
- Insert the Cartridge Base Insert into the die body, ensuring it is securely in place.
- Attach the bullet seating stem that corresponds to the bullet type you are using.

### 3. Usage

- Place the cartridge case into the Arbor press and align it with the die.
- Slowly and steadily apply pressure to the Arbor press handle to seat the bullet.
- Monitor the process closely to ensure proper seating and avoid overcompression.
- Once the bullet is seated, carefully remove the cartridge case from the press.

#### **4. PostUsage**

- Clean the die inserts after each use to remove any residue or debris.
- Store the die inserts in a dry, safe place away from children and pets.

### **Disposal Instructions**

- Dispose of any packaging materials in accordance with local regulations.
- If the die inserts become damaged beyond repair, dispose of them responsibly. Check with local waste management services for proper disposal methods.
- Do not dispose of the product in household waste. Follow local guidelines for hazardous waste if applicable.

### **Contact Information for Further Support**

For any inquiries or further assistance regarding the INFINITY APS Die Inserts, please consult the manufacturer's website or customer service.

By following these safety instructions, you can ensure a safe and effective experience with your INFINITY APS Die Inserts. Thank you for your attention to safety.

# About Us

## Brownells UK

### **Brownells UK - World's Largest Supplier of Gun Parts, Gunsmith Tools & Shooting Accessories**

Unit 1, Laughing Dog Industrial Estate  
London Road  
Rugby  
Warwickshire  
CV23 9LP

[www.brownells.co.uk](http://www.brownells.co.uk)